

Clark County Historical Association
Officers

**Clark County
Historical Journal
2011**



Editor

Phyllis Kinnison

IT Assistant

Marla Rigsby

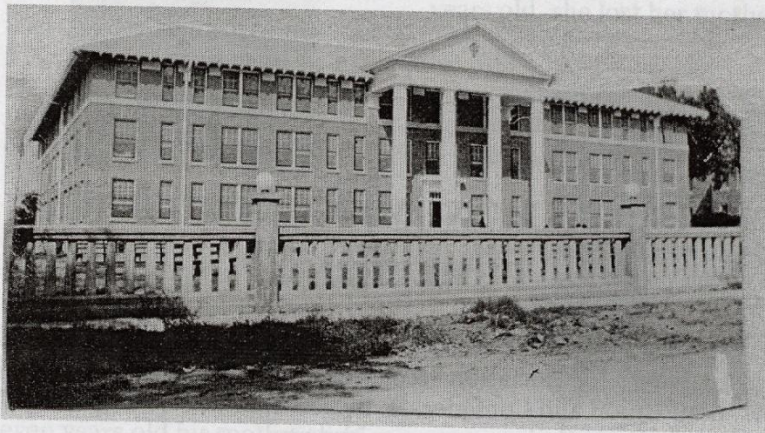
Student Assistants

Abigail Baze, Lauren Jackson and Ashley Sharp

TABLE OF CONTENTS

<i>CCHA Erects Monument at Rose Hill Cemetery</i> By Shirley Graham	1
<i>Dr. George Emmet Cannon: Early Ouachita Graduate and Benefactor</i> By Jodie Welch Wyatt	2
<i>Lucius, the Law, and the Hog</i> By Lin Watson	9
<i>News from Curtis, Copeland Ridge, and Hart's Chapel</i> Transcribed By Delisa Seale	13
<i>Bible Records</i> Transcribed by Shirley Pace Graham, Laverne Todd and Betty Coffman	29
<i>Memories of Rush: A Tribute to a Beloved Brother</i> By Colonel (Ret.) Eugene M. (Gene) Simonson	34
<i>Tobey and Clements Families with Notes about Arkadelphia</i> By Betty Tobey Coffman	53
<i>University of Arkansas Announces the <u>Index Arkansas</u></i>	57
<i>Hammonds Chapel Home Extension Club of 1950's "Friendship Quilt"</i> By Joyce Bear Parrish	58
<i>The Fitzgeralds: From Cavalry to Calvary</i> By Susie Dent	59
<i>My Memories of Growing Up in Arkansas</i> By Evelyn Gates Taylor	67
<i>My Experience during World War II</i> By Duane Thomas	69
<i>Down to Earth, 1939</i> By Beryl Hignight Lewallen	71
<i>Robert A. "Bob" Wyatt and Emma J. Maxwell</i> By Jodie Welch Wyatt	77
<i>Home</i> By Jo Cannon Welch	80
<i>New Houses Stopped an Exodus</i> By Fay Williams	82
<i>Remembrances of Haiti</i> By Robert H. Patterson	84
<i>Letter from North Carolina</i> By Shirley Pace Graham	88

<i>A Short History of the Winburn and Cherry Families: Notes on the Family History of Dr. Hardy L. Winburn, Minister</i> By Shirley Pace Graham and Laverne Todd	93
<i>Killer Tornado in Arkadelphia—1997</i> By Velma Seale	101
<i>Images of the 1997 Tornado</i> By Phyllis Kinnison	107
<i>Pleasant Hill Presbyterian Church: Known as Palestine Presbyterian Church</i> By Laverne Todd	109
<i>News from Special Collections</i> By Phyllis Kinnison	116
<i>Belding-Gaines-Williamson family papers</i> Compiled by Kelly Knobloch, Corey Morrow and Phyllis Kinnison	117
<i>History of Mt. Zion Church</i> By Lucile Burns	118
<i>Index</i>	125



Cone-Bottoms Hall was built in 1923 as a girls dormitory on Ouachita Baptist College campus. For many years it was the largest residence hall in Arkansas and was considered by many as the most beautiful in the South. It served as a residence hall from 1923-1986. After extensive renovation, the building became the Grant Administration Center in 1995 and currently houses many of the Ouachita Baptist University administrative offices. It was named for two major donors—W. T. Cone and Mr. and Mrs. George Bottoms. Utterback, Victoria. "Stately Halls and Utilitarian Shacks: A History of the Buildings of Ouachita Baptist University." Thesis (The Carl Goodson Honors Program), Ouachita Baptist University, 2008.