

Building Specifications Technical Information

Jones Performing Arts Center

Ouachita Baptist University

410 Ouachita St

OBU Box 3767 Arkadelphia, AR 71998

Production Manager/ Technical Director

Nick Smith

870.245.5262

smithn@obu.edu

General Information:

- JPAC is a 1488 seat proscenium theater
- JPAC is not a union house. The student crew members are paid by Federal and OBU work study. Only JPAC crew are allowed to operate JPAC equipment.
- JPAC reserves the right to use JPAC crew as department heads and in key technical positions where safety is a concern.

Stage:

- JPAC has a sprung, dance style stage with painted matte black masonite covering
- Proscenium opening: 54ft wide by 26ft high
- Grid height: 54ft
- SL and SR Wing space: 22ft wide by 40ft deep
- Plaster line to last US fly line: 31ft
- Plaster line to apron front DS center: 10ft
- Plaster line to apron front DS left and right: 4ft
- Loading dock: Upstage left at stage level, 12ft high by 10ft wide sliding door
- JPAC is a counterweight fly system with 22 single purchase lines. All lines fly and travel from stage right at stage level
- Lock rail - Stage Right at stage level
- Pin Rail - Stage Right at 35ft
- Loading Rail - Stage Right at 50ft

Audio:

- Soundcraft Vi3000 digital console and stage rack
- Dynacord Cobra Line Array
- 6 EV TX1152FM wedges
- Telex/RTS Intercom stations
- wireless mics (handheld and lavalier), dynamic and condenser mics
- DIs, stands, cables, etc

Lighting:

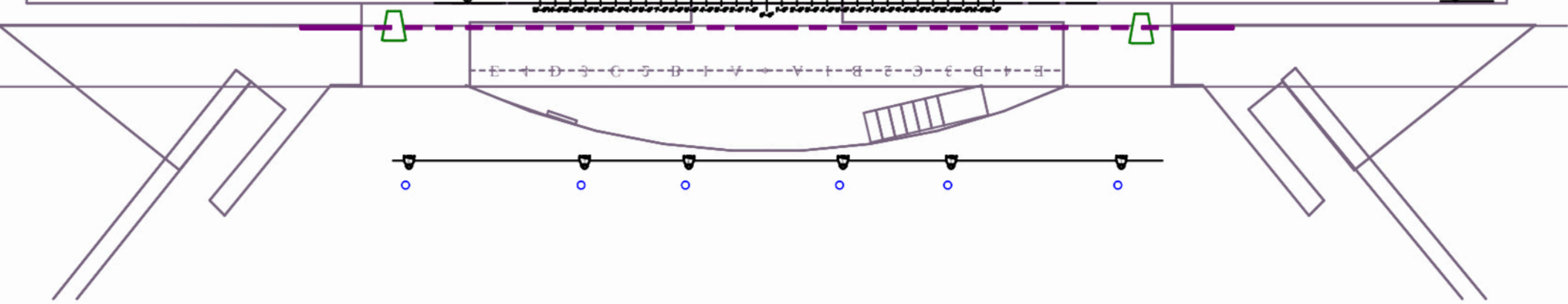
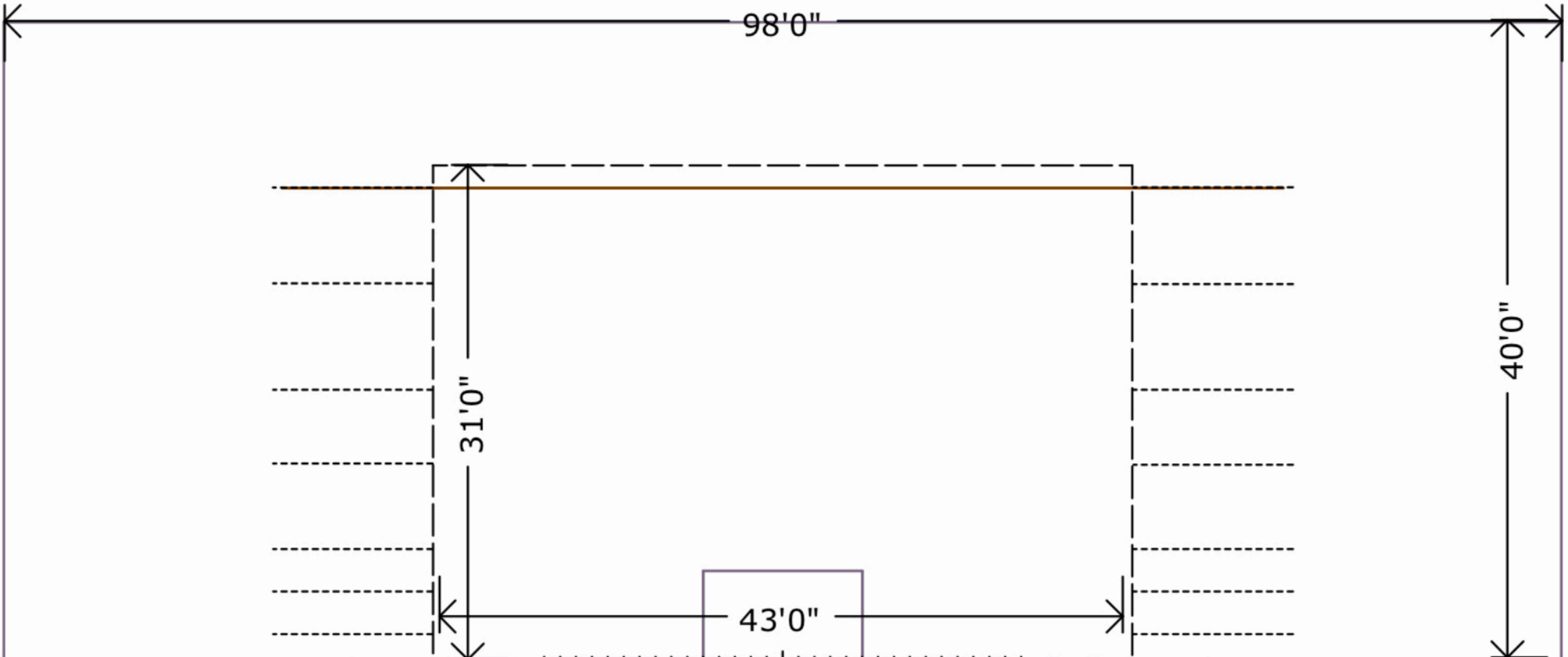
- Jands Vista L5
- ETC Sensor dimming racks
- ETC, Altman, L&E, Elation, Chauvet fixtures
- 2 Robert-Juliat Buxie 575W MSD follow-spots

Electrical:

- Temp audio: 100 amp 3-phase, upstage center
- Temp lighting: 400 amp 3-phase, upstage right

Support Rooms:

- 2 cast dressing rooms located off stage left, with restroom and shower facilities
- 1 common make-up room connecting dressing rooms, with mirrors and lighted stations
- 1 green room located off stage left hallway



1 2 3 4 5 6 7

